

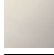






20 000 892

- hole diameter 32 mm
- rosette Ø 55 mm



	Dark Chrome	20 000 892-19
	Chrome	20 000 892-00
	Brushed Platinum	20 000 892-06
	Platinum	20 000 892-08
	Brushed Durabronze (23kt Gold)	20 000 892-28
	Matte Black	20 000 892-33
	Brushed Champagne (22kt Gold)	20 000 892-46
	Champagne (22kt Gold)	20 000 892-47
	Brushed Chrome	20 000 892-93
	Brushed Dark Platinum	20 000 892-99

20 000 892

mm [inches]



Flow rate chart

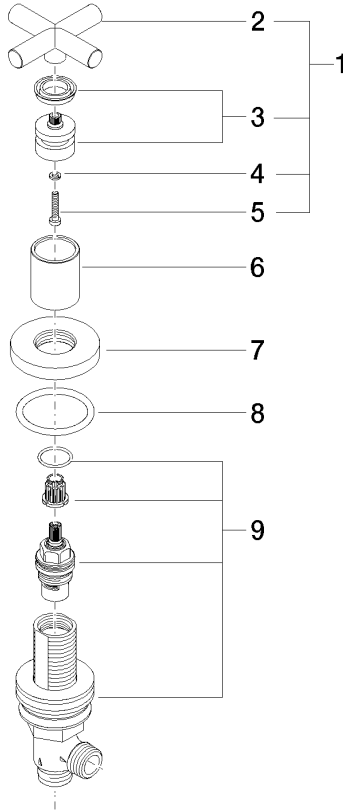


Certificates

WRAS_2112061.

20 000 892

Parts for other finishes can be found here: [Chrome](#)



Spare parts list

No.	Item Number	Name	Quantity used	Delivery time
1	90 20 89 010 10-19	handle	1	20
2	09 20 89 010-19	handle	1	60
3	90 12 12 007 00-19	base	1	20
4	90 30 11 029 00 90	disc	1	2
5	90 30 30 075 00 90	screw	1	2
6	09 21 02 140-19	sleeve	1	20
7	09 27 89 105-19	rosette	1	20
8	90 14 10 043 00 90	seal	1	2
9	90 17 11 040 31 90	side panel	1	2